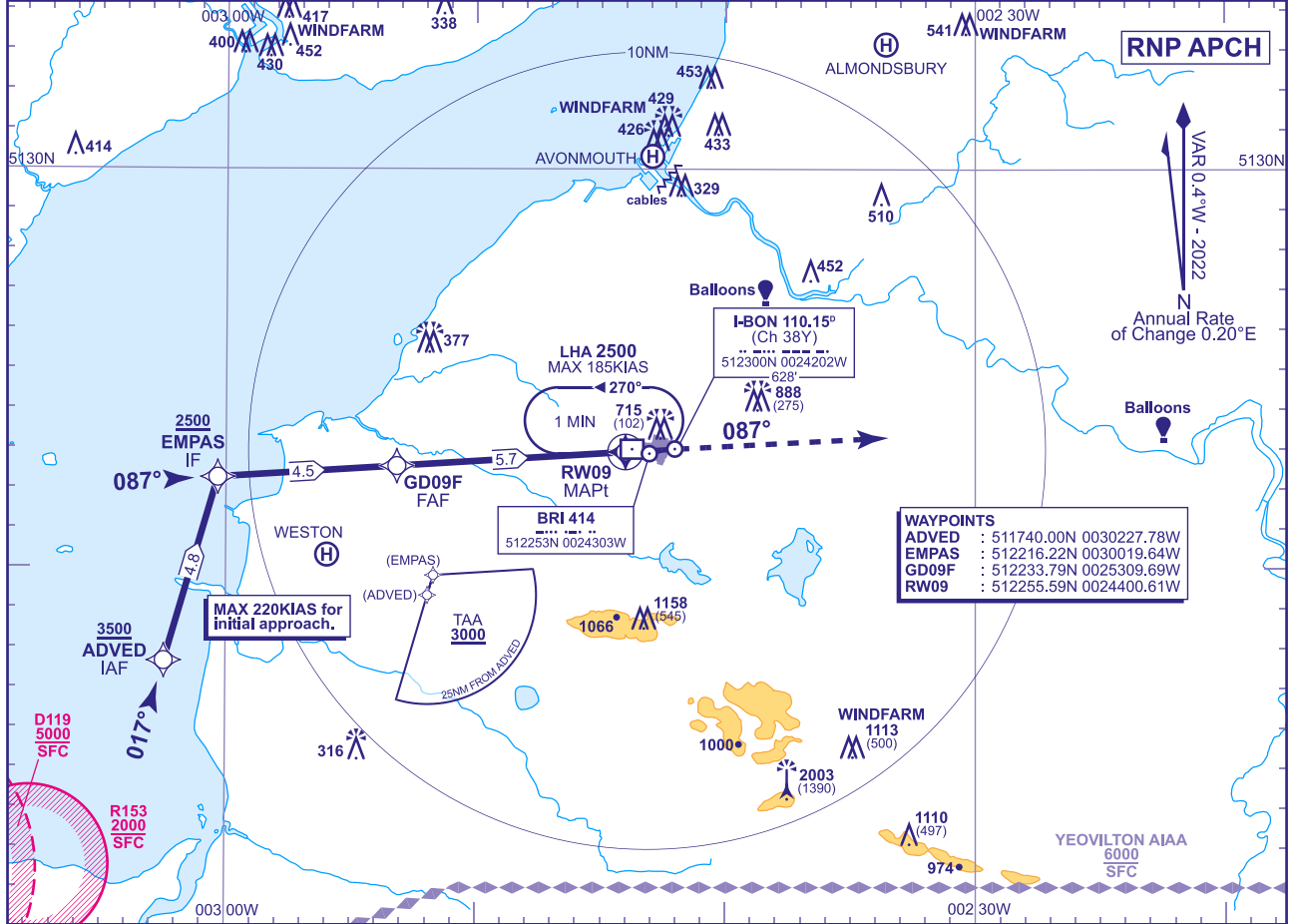


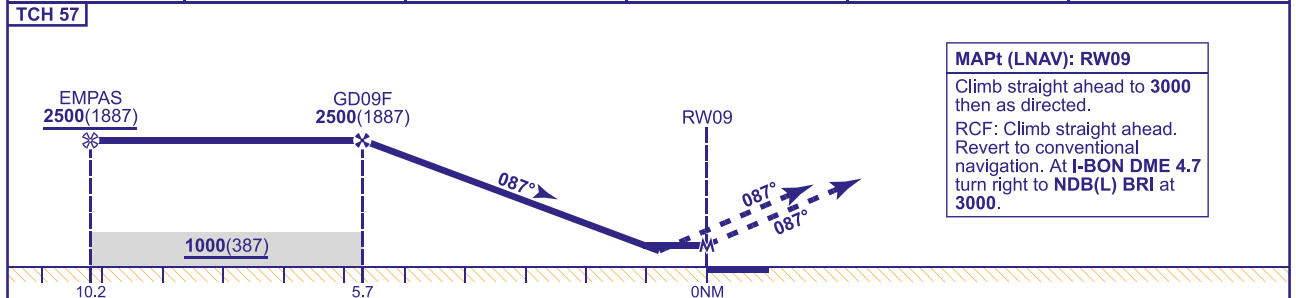
INSTRUMENT APPROACH CHART - ICAO

BRISTOL RNP  
RWY 09  
(ACFT CAT A,B,C,D)

<div><div>30</div><div>MSA 25NM ARP</div></div>	TWR 133.850, 136.080*	BRISTOL TOWER	AD ELEVATION 622	MIN TEMP -10°C TRANSITION ALTITUDE 6000
	APP 125.650, 136.080*	BRISTOL RADAR	THR ELEVATION 613	
	RAD 136.080*	BRISTOL DIRECTOR	OBSTACLE ELEVATION 2003 AMSL (1390) (ABOVE THR)	
	ATIS 126.030	BRISTOL INFORMATION	BEARINGS ARE MAGNETIC	
	*See AD 2.18 for details.			



RECOMMENDED PROFILE VNAV - VERTICAL PATH ANGLE 3.0°, 318FT/NM, LNAV - Gradient 5.24%, 318FT/NM					
NM to RW09	5	4	3	2	1
ALT(HGT)	2270(1657)	1950(1337)	1630(1017)	1310(697)	990(377)



Aircraft Category		A	B	C	D	Rate of descent FT/MIN	G/S KT	160	140	120	100	80
OCA (OCH)	LNAV/VNAV	910(297)	910(297)	910(297)	910(297)		850	740	640	530	420	
	LNAV	910(297)	910(297)	910(297)	910(297)							
VM(C)OCA (OCH AAL)	Total Area	1050(428)	1190(568)	1460(838)	1560(938)							
	North of RWY 09/27	1050(428)	1190(568)	1290(668)	1320(698)							

NOTES 1 Pilots should 'Request RNP Approach' on first contact with Bristol Radar.